

# Ophthalmology Residency Match Summary Report 2017



Association of University  
Professors of Ophthalmology



**sfmatch**

Residency and Fellowship Matching Services

## Positions Overview

### POSITIONS

	Jan 2008	Jan 2009	Jan 2010	Jan 2011	Jan 2012	Jan 2013	Jan 2014	Jan 2015	Jan 2016	Jan 2017
Offered	454	459	458	461	461	460	461	465	469	468
Filled	453	458	456	458	458	455	460	464	467	462
Left	1	1	2	3	3	5	1	1	2	6

### 2017 USMLE Data

Matched Mean	243
Matched Median	245
Matched 25th Percentile	236
Matched 75th Percentile	252
Unmatched Mean	227

### Participating Applicants by Category

CATEGORY	Total #	% in Match
US Osteopathic Seniors	19	3
US Osteopathic Graduates	4	1
US Allopathic Seniors	472	80
US Allopathic Graduates	43	7
International Graduates	56	9
Total Match Participants	594	100

# Ophthalmology Residency Match

## Jan 2017

TOTAL APPLICANTS REGISTERED AND PARTICIPATED PER CATEGORY	Registered #	Participated	Matched	Matched/ Participated (%)
US Osteopathic Seniors	34	19	5	26
US Osteopathic Graduates	6	4	0	0
US Allopathic Seniors	496	472	418	89
US Allopathic Graduates	50	43	19	44
International Applicants	116	56	20	36
<b>TOTAL</b>	<b>702</b>	<b>594</b>	<b>462</b>	<b>78</b>

## Jan 2016

TOTAL APPLICANTS REGISTERED AND PARTICIPATED PER CATEGORY	Registered #	Participated	Matched	Matched/ Participated (%)
US Osteopathic Seniors	32	17	7	41
US Osteopathic Graduates	6	3	1	33
US Allopathic Seniors	562	511	422	83
US Allopathic Graduates	64	47	24	51
International Applicants	131	56	13	23
<b>TOTAL</b>	<b>795</b>	<b>634</b>	<b>467</b>	<b>74</b>

MATCH APPLICANTS IN THE  
2017 CYCLE

	Total #	% of Registrants Who Participated
Total Match Registrations	702	94 %
Total CAS Participants	660	

MATCH APPLICANTS IN THE  
2016 CYCLE

	Total #	% of Registrants Who Participated
Total Match Registrations and % Matched	795	91 %
Total CAS Participants	726	

MATCH APPLICANTS IN THE  
2015 CYCLE

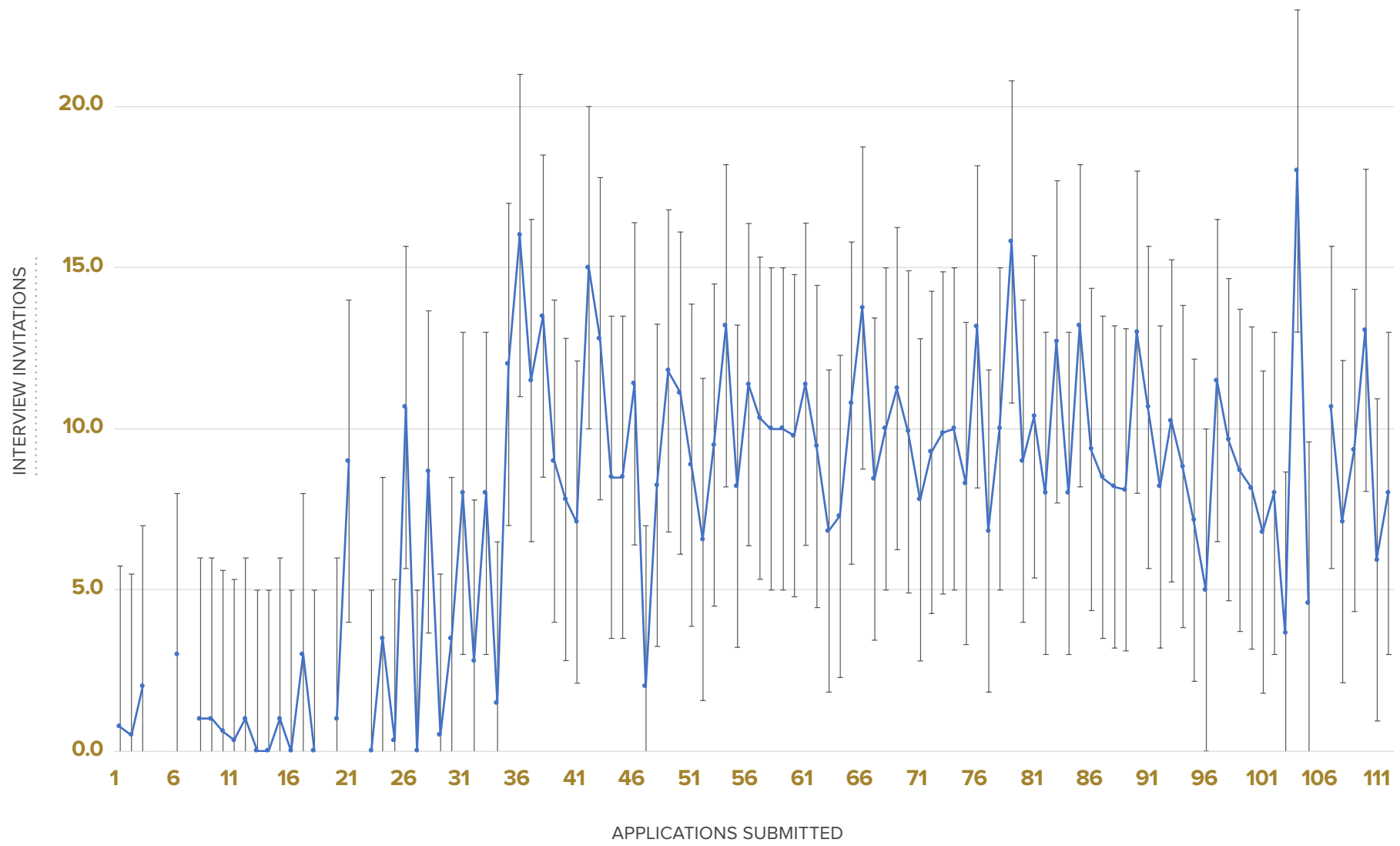
	Invites AVG#	Applications Dist #
Matched	12	70
Unmatched	4	73

## Application and Position Summary

	2016	2017
AVG # APPLICATIONS PER MATCHED INDIVIDUAL	70	72
AVG # APPLICATIONS PER UNMATCHED INDIVIDUAL	73	67
TOTAL # POSITIONS OFFERED	469	468
TOTAL # POSITIONS FILLED	467	462
TOTAL NUMBER OF UNFILLED POSITIONS	2	6

## Interview Invitations vs Number of Applications Submitted

Average number of interviews offered as a function of the number of applications distributed  
(with “standard error” bars calculated).



## Overall Statistics

	Jan 2008	Jan 2009	Jan 2010	Jan 2011	Jan 2012	Jan 2013	Jan 2014	Jan 2015	Jan 2016	Jan 2017
Total # of registrations	869	866	823	823	784	751	757	808	795	702
Total # of CAS participants	789	767	728	746	711	683	700	753	726	660
Total # of rank lists	639	654	630	622	595	583	611	644	634	594
Total # of applicants ranked	629	645	620	608	579	553	597	614	624	578
<b>MATCHED APPLICANTS</b>										
US Seniors	394	419	415	405	411	402	419	413	429	423
US Grads	27	24	13	26	26	33	23	34	25	19
IMGs	32	15	28	27	21	20	18	17	13	20
Total Matched	453	458	456	458	458	455	460	464	467	462
Unmatched applicants	186	196	174	164	137	128	151	180	167	132
<b>PERCENT MATCHING</b>										
Overall	71%	70%	72%	74%	77%	78%	75%	72%	74%	78%
US Seniors	87%	92%	91%	88%	90%	89%	91%	89%	92%	92%
US Grads	6%	5%	3%	6%	6%	7%	5%	7%	5%	4%
IMGs	7%	3%	6%	6%	4%	4%	4%	4%	3%	4%
<b>POSITIONS</b>										
Offered	454	459	458	461	461	460	461	465	469	468
Filled	453	458	456	458	458	455	460	464	467	462
Left	1	1	2	3	3	5	1	1	2	6

## USMLE Step 1 Scores Information

	Jan 2008	Jan 2009	Jan 2010	Jan 2011	Jan 2012	Jan 2013	Jan 2014	Jan 2015	Jan 2016	Jan 2017
Matched	232	235	236	237	238	239	242	243	244	243
Unmatched	212	212	210	214	220	222	226	228	229	227
Avg. applications per applicant	48	50	53	52	53	58	60	61	68	68

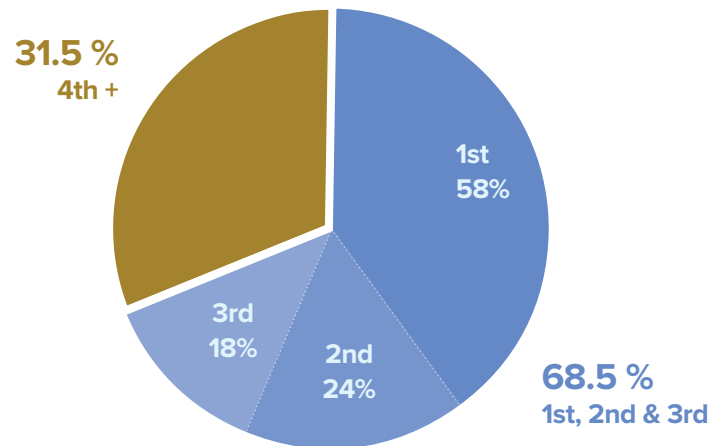
## Repeat Applicants

2011–2017	Matched	Unmatched
321 Total	99	222
Percent	31%	69%

## Rank Analysis for Applicants

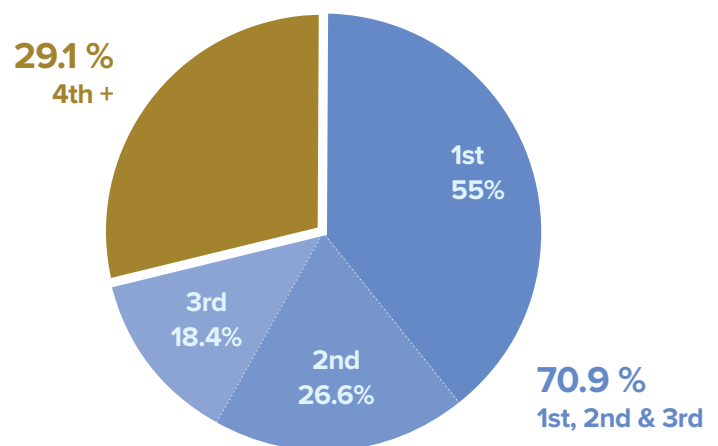
### 2017 Ranking Results by Matched Applicants

MATCHED 1ST CHOICE	<b>186</b>
MATCHED 2ND CHOICE	<b>78</b>
MATCHED 3RD CHOICE	<b>56</b>
MATCHED 4TH CHOICE	<b>44</b>
MATCHED 5TH CHOICE	<b>33</b>
MATCHED 6TH CHOICE	<b>26</b>
MATCHED 7TH CHOICE	<b>17</b>
MATCHED 8TH CHOICE	<b>12</b>
MATCHED 9TH CHOICE	<b>5</b>
MATCHED 10TH + CHOICE	<b>5</b>
<b>TOTAL</b>	<b>462</b>



### 2016 Ranking Results by Matched Applicants

MATCHED 1ST CHOICE	<b>182</b>
MATCHED 2ND CHOICE	<b>88</b>
MATCHED 3RD CHOICE	<b>61</b>
MATCHED 4TH CHOICE	<b>46</b>
MATCHED 5TH CHOICE	<b>33</b>
MATCHED 6TH CHOICE	<b>12</b>
MATCHED 7TH CHOICE	<b>14</b>
MATCHED 8TH CHOICE	<b>10</b>
MATCHED 9TH CHOICE	<b>9</b>
MATCHED 10TH + CHOICE	<b>12</b>
<b>TOTAL</b>	<b>467</b>

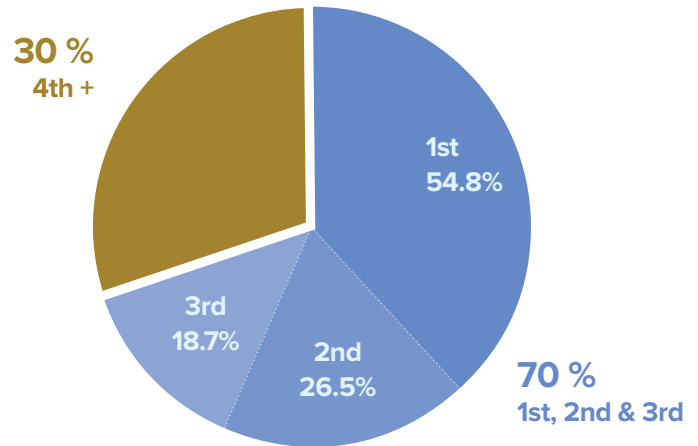




## Continued

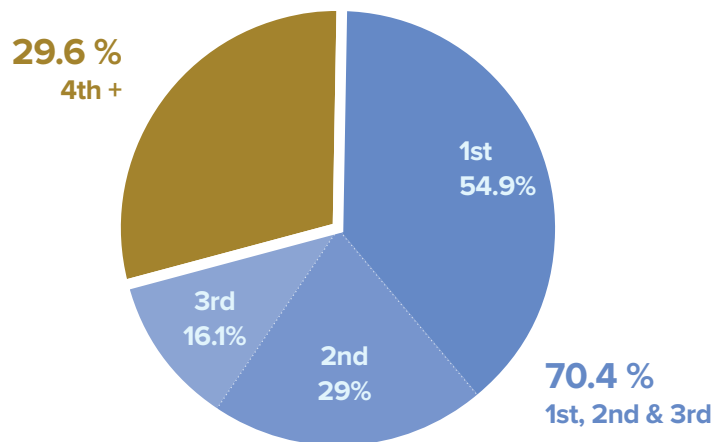
## 2015 Ranking Results by Matched Applicants

MATCHED 1ST CHOICE	<b>178</b>
MATCHED 2ND CHOICE	<b>86</b>
MATCHED 3RD CHOICE	<b>61</b>
MATCHED 4TH CHOICE	<b>48</b>
MATCHED 5TH CHOICE	<b>26</b>
MATCHED 6TH CHOICE	<b>17</b>
MATCHED 7TH CHOICE	<b>13</b>
MATCHED 8TH CHOICE	<b>11</b>
MATCHED 9TH CHOICE	<b>10</b>
MATCHED 10TH + CHOICE	<b>14</b>
<b>TOTAL</b>	<b>464</b>



## 2014 Ranking Results by Matched Applicants

MATCHED 1ST CHOICE	<b>178</b>
MATCHED 2ND CHOICE	<b>94</b>
MATCHED 3RD CHOICE	<b>52</b>
MATCHED 4TH CHOICE	<b>41</b>
MATCHED 5TH CHOICE	<b>34</b>
MATCHED 6TH CHOICE	<b>19</b>
MATCHED 7TH CHOICE	<b>13</b>
MATCHED 8TH CHOICE	<b>10</b>
MATCHED 9TH CHOICE	<b>12</b>
MATCHED 10TH + CHOICE	<b>7</b>
<b>TOTAL</b>	<b>460</b>



Association of University Professors of Ophthalmology

655 Beach Street, San Francisco CA 94109

www.sfmach.org

Phone: 415.447.0350

Fax: 415.561.8535

©2017 AUPO. All rights reserved.